

The  
Flying Squirrel Lodge



WELCOME



# Hello

We are Dan and Heidi Berg. After Heidi sold her house last summer we decided to purchase and renovate a property to create our "dream vacation home." We searched and searched for a cabin in the woods that was far enough away to be a vacation home, but not so far away that we would get tired of going there because of the long drive.

One day Dan was looking at properties on Zillow and yelled out "WOW! Look at this!" He had always longed for a log cabin and this one also had really nice masonry. It was the right distance, the right size and the right price. We visited the property and purchased it soon afterwards.

The next 6 months were spent renovating the property--tearing down the walls and putting in new wiring, a new heating system, a new roof, new dry wall, new light fixtures and new hardwood floors. Countless hours were spent renovating and decorating this wonderful, magical hideaway we have created.

Now we'd like to share our dream home with you. We hope that you love being here as much as we do.

*Heidi and Dan Berg*

# About Us.....

## Heidi

Heidi comes from a blue-collar family in Bernville (Berks County) PA. She worked for over a decade as a cook in an Italian Restaurant before going back to college where she pursued a degree in Biology. Following her graduation from Reading Area Community College (AA Biology) and Albright College (BS Biology), she was one of four students accepted into the Cell and Molecular Biology Graduate Program at Penn State, Hershey Medical Center. Heidi's graduate studies were done in the Jake Gittlen Cancer Research Institute and involved developing an RNA enzyme system to down regulate a new potential tumor suppressor protein (PTEN) in order to better characterize it. After two post-doctoral fellowships at Penn State, Heidi began teaching Anatomy and Physiology, Microbiology and Human Biology at several local colleges including Penn State, Harrisburg; Lebanon Valley College, Reading Area Community College and Harrisburg Area Community College where she is currently tenured faculty in the Biology discipline. Heidi has one son, Alexander. Her interests include cooking and baking, travel, nature and landscape photography and gardening.

## Dan

Dan's 45 year background as a corporate pilot has afforded him the time to pursue other business interests. In 1977, along with his brother Tom, he started Berg Brothers Logging, cutting saw timber and veneer logs throughout southeastern Pennsylvania. In 1987, he started a new business, Bergs Craftsmanship In Wood, handcrafting custom furniture and built-in cabinetry throughout Pennsylvania and New Jersey.

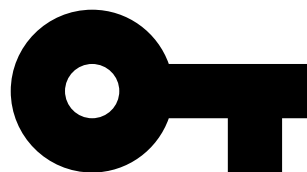
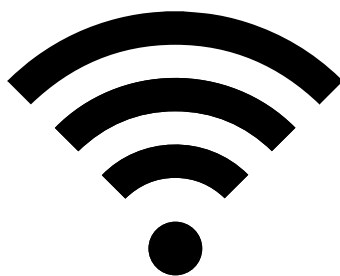
After closing the Cabinetry business in 2009, Dan started Berg's Canvas Gallery, a print-making and photography mounting studio for artisans and photographers. Since retiring from flying in 2018, he has expanded the print studio from canvas and fine art printing to metal and glass. Like Heidi, Dan loves travel and nature and landscape photography. His craftsmanship can be seen in most of the photographs adorning the walls of the FSL as well as in the tables, cabinets and nightstands. He and his late wife Sherri had three children (Crystal, Nicole and Daniel).

## Us....

Heidi and Dan met in 2014 through Match.com and have been together ever since. They married in 2017.



# wifi



Log in: Lodge guest

Password: 825oezbdribe



# Check-In

Check in by 3:00  
Check out by 12:00

## Directions

### From Harrisburg:

Take US-22 W/US-322 W toward Lewistown for 55.4 miles  
Take the US-22 W/US-522 S exit on the left toward Mt Union (0.6 miles)  
Continue onto US-22 W/US-522 S for 39.9 miles  
Turn left onto Old Rte 22 (0.3 miles)  
Turn right at the 1st cross street onto Loop Rd/T616 (1 mile)  
Turn right onto Ezb Dr. (0.3 mile)

### From Pittsburgh:

Get on I-579 S  
1 min (0.3 mi)  
Get on I-376 E from Boulevard of the Allies  
2 min (1.9 mi)  
Take US-22 E to Tr614 in Porter Township  
2 hr 8 min (115 mi)  
Take Loop Rd/T616 to Ezb Dr  
4 min (1.5 mi)  
Turn right onto Ezb Dr. (0.3 mile)

## Parking

There is ample parking in the small lot at the end of the property as well as in the driveway. Please do not park on Ezb Drive.

## Security + Keys

The security code changes with each guest. We will email you your specific code.

# House Guide

## Temperature

There is a central heating and air conditioning system for the whole house located in the upstairs hallway. The Great Room has a new state-of-the-art pellet stove with touch screen control.

Pellets are included in the cost for your stay. Because of the size of the property, we have 2 remote control mini-split heating and air conditioning units ( 1 in the Great Room; the other at the Bar). Additionally there are 3 wall-mounted electric heaters for your comfort. They are located in the Game Room, the Master Suite and the Blue Bedroom.

## Trash + Recycling

In the kitchen at the coffee bar, there are two built-in trash cans. Use the left one for recycling and right one for trash. There are trash cans in almost every room as well as the deck. NEVER put anything into trash cans without a bag.

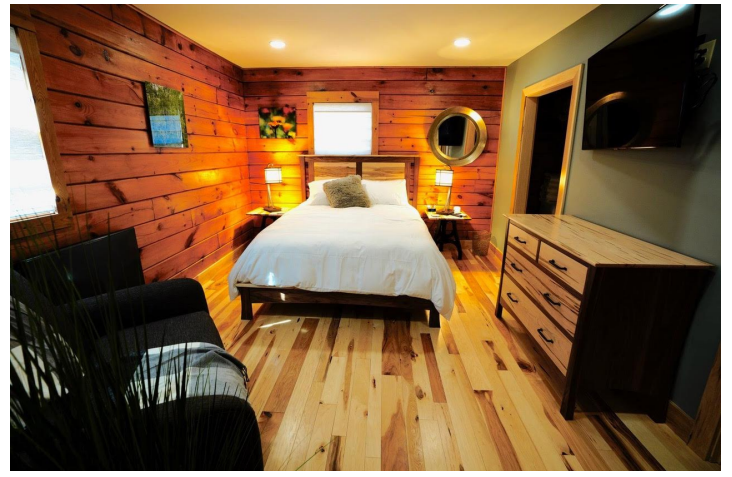
## Large Amenities

Coming in late June: Rockola Jukebox

## Laundry

There is a large capacity HE washer and large capacity dryer in the laundry room that are available for your use while you are here. A limited number of detergent pods and fabric softener sheets are available for your use.





## Extra Resources

### Bedding:

Pillows and blankets: Great Room closet.

Bed Linens: The Master Suite and two hall bedrooms each have a complete set of bed linens for that bedroom in the closet. The extra linens for the Loft Suite is in a basket to the left of the dresser. Extra linens for Bunk-bed bedroom are in Laundry Room.

### Bathrooms:

Toilet paper: each of the bathroom vanities.

Towels: Extra towels can be found in the vanity of Master bathroom and Downstairs bathroom. Extra towels can be found in the closet of the Hall bathroom.

### Coffee Bar:

Extra espresso beans, tea bags, condiments and to-go coffee cups: in cabinets above or beneath the coffee bar.

### Kitchen

Trash bags: under sink

Dish washer tabs: Drawer in front of sink



## Pellet Stove Fireplace Insert

The Great Room has a new state-of-the-art pellet stove with touch screen control. Pellets are included in the cost for your stay. To operate, press the start button on the top left side of the control panel. It should turn green. For the unit to run, set the thermostat (top right) to a setting higher than the room temperature in the center. It will show that it is igniting and will take approximately 10 minutes to ignite. Wait for it!

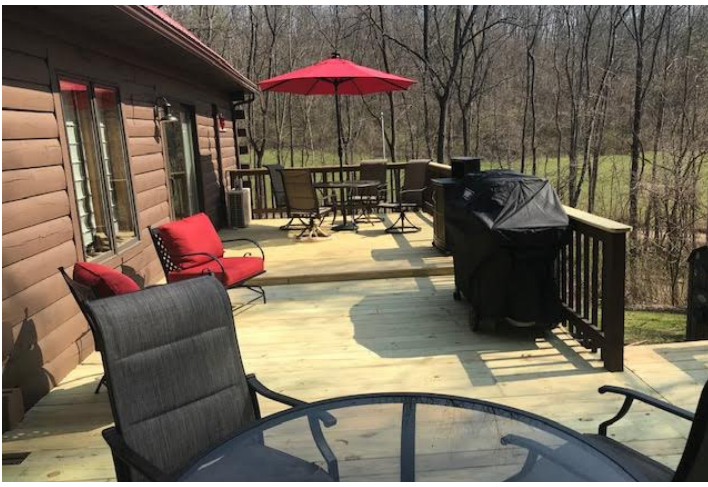
The stove holds 65 pounds of pellets--enough for 1 day of continuous burning. To refill, open the top door (the unit will stop) and use the scoop to fill the hopper from the pellet bins on either side of the fireplace. The stove will not operate with the door open, so make sure you close it firmly after filling. \*Important note: the ashes need to be scraped at least once a day when burning continuously. To do, open the front door, then, using the ash scraper, scrape ashes from the center of the burn pot into the ash pan below. We will take care of emptying the ash pan. If you are unsure of the process, no worries! Please contact Dan (610 914-7095) and he will talk you through it.

## Firepit

There is a plastic container with a red lid at the firepit that has a striker, kindling and fire-starter logs. Please feel free to use them to get your fire started. We have set aside complementary firewood in the metal bin and in the canvas carriers at the firepit. This will provide you with enough fuel for several nice bonfires. Please do not take firewood off the piles outside the firepit. If you would like additional firewood beyond that which we have provided, please contact us and we will have it delivered. There will be an additional fee for extra wood.

DO NOT BURN FIRES WHEN WINDY. DO NOT LEAVE FIRES UNATTENDED. ADULTS MUST BE IN ATTENDANCE AT ALL TIMES WHEN A FIRE IS BURNING. IN THE EVENT OF A SPARK STARTING A FIRE, CALL 911 IMMEDIATELY. THERE IS A HOSE LONG ENOUGH TO REACH THE FIREPIT IF NECESSARY. MAKE SURE FIRE IS COMPLETELY EXTINGUISHED BEFORE LEAVING.





## Patio + Grill

Please cover the the two chairs with red cushions when not in use. Also, to prevent possible damage from wind, keep umbrellas down when not in use. Both umbrellas have solar-powered lights that turn on using a switch on the post.

Grill: Remove cover. Make sure there is at least a 6" space between the railing and the grill as a safety precaution. Turn the gas valve on. The grill has four burners. Turn desired burner(s) to "on" position and press striker. Set to desired temperature. Scrape off residue when finished and turn off gas valve. When cool, cover grill.

## Coffee Bar

### Breville Coffee Grinder

Turn on grinder with switch on front. Remove lid and put beans into hopper. Choose number of cups and coarseness of grind using dials on front. Coarseness of grind should correspond to whether you are using the drip coffee maker or french press. Espresso machine has its own grinder. Press button on front and machine will display timer for length of grind. Timer counts down and grinder stops when finished. Use coffee immediately OR push plastic lid down to keep coffee fresh until needed.

### Pour-over Bunn Coffee Maker

Put filter in basket and add appropriate amount of ground coffee. Fill the white water pitcher up to the appropriate number of ounces of water for the number of cups of coffee you are making. Turn on burner switch on front of coffee maker. **MAKE SURE POT IS IN PLACE BEFORE POURING WATER INTO TOP OF COFFEE MAKER!!!!** This system is different from regular drip coffee makers. There is **ALREADY** water in the coffee maker that is heating. When you pour water in you are essentially displacing this water, so the hot water comes out **IMMEDIATELY** and will make a mess if you don't already have a pot underneath. Trust us--we know because it has happened to us!



## Coffee Bar (cont.)

### Keurig

Make sure tank is filled. Insert Keurig "cup" into holder. Select the number of ounces of coffee you would like. Press the "K" in the center. Remove cup after brewing.

### Breville Barista Touch Espresso Machine

Turn on machine using button on front. Before starting, make sure the tank in the back is filled with water and the hopper on top left is full of espresso beans. Espresso beans are in the top right cabinet of the coffee bar. Different filter baskets for the portafilter, the "razor," the tamper and the full instruction book are in the drawer on the right of the coffee bar.

The first time using the Barista, you should probably press the "i" which will take you through a brief rundown of the machine. If you have used an espresso machine before and don't feel you need a basic tutorial, just press the picture of the drink you would like to make to get started. Choices include espresso, latte, cappuccino, etc. There are 3-4 steps to making each drink: 1) grinding the beans, 2) tamping the espresso down and (optional) using the "razor" to remove excess espresso 3) brewing (extracting) the espresso and 4) texturing the milk.

FOR EACH OF THE 4 PARTS LISTED ABOVE, FOLLOW SPECIFIC INSTRUCTIONS THAT APPEAR WHEN YOU SELECT PICTURE OF THE DRINK YOU WOULD LIKE TO MAKE.

If you need more detailed instructions, refer to the full instruction manual in the drawer on the right of the coffee bar

## Kitchen

### Refrigerator + Dishwasher

Refrigerator doesn't always close completely. Please check to make sure it is closed.

Dishwasher tabs are located in the drawer in front. To use, fill with dishes. Insert tab in door.

Press desired settings. Press start. Shut door. Most cycles are 2-3 hours long.



## Kitchen (cont.)

### Ceramic Top Stove

Match the burner size with the pot or pan size. It is important that the burner is not larger than the cookware. Don't use abrasive cleaners or metal scrubbing pads to wipe up spills. Doing so will scratch up the surface of your glass top stove. Use only a soft cloth to clean. If you do have a spill-over and a hard residue accumulates, either use the special cleaning kit (under the sink) or, if unsure how to clean properly, leave for the cleaning crew.

### Oven and Microwave

Use the "quick" setting on the right so that it will reach the correct temperature more quickly. It seems to take a while otherwise.

Microwave has many individual settings for cooking popcorn, etc.

## Bathroom

### Towel Warmer

When getting ready to take a shower, unfold towel, crumble and place inside towel warmer.

Press button on right. It will glow green on the right and orange on the left. When the towel is warmed, the green light will go out. The orange light corresponds to the heating element in the warmer. As long as it is warm, the orange light will glow. The towel warmer turns off automatically

## Game Room

### Ms. Pac Man

The on/off switch is located on the back upper right of the game. It can remain on the entire time of your stay unless you want to turn it off to prevent children from playing it. The screen that is on initially shows the different games available. There are 15 different screens of 6 games to choose from. Most of the popular ones are on the first few screens. Highlight the game you'd like to play and select. Select again to play. No money is required. All play is free!!

# Amenities

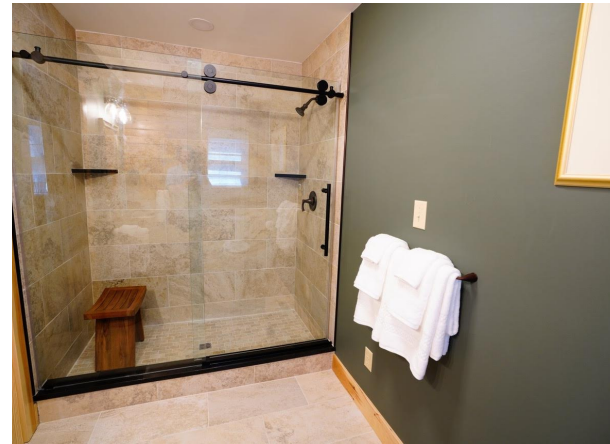
We provide a variety of household items for you to use during your stay. Please let us know if you need assistance locating these items or additional items.

## Items Currently Available



### BATHROOMS

- Bath towels and hand towels
- Washcloths and Make-up remover cloths (black)
- Bathroom toiletries: shampoo, conditioner, body wash
- Hair dryer in each bathroom
- Towel warmer (hall bathroom)
- Scale (hall bathroom)
- Shower benches (master bath and hall bathroom)
- Foaming hand soap at every sink (4)



### LAUNDRY

- Large capacity HE washer
- Large capacity dryer
- Laundry detergent and fabric softener sheets
- 2 Irons and ironing boards (master bedroom and laundry room)

### BAR

- Bar set
- Shot glasses, white wine glasses, red wine glasses, beer mugs, beer glasses, highball glasses, rocks glasses
- Ice machine
- Wine refrigerator
- Small refrigerator/freezer
- Microwave
- Coffeemaker

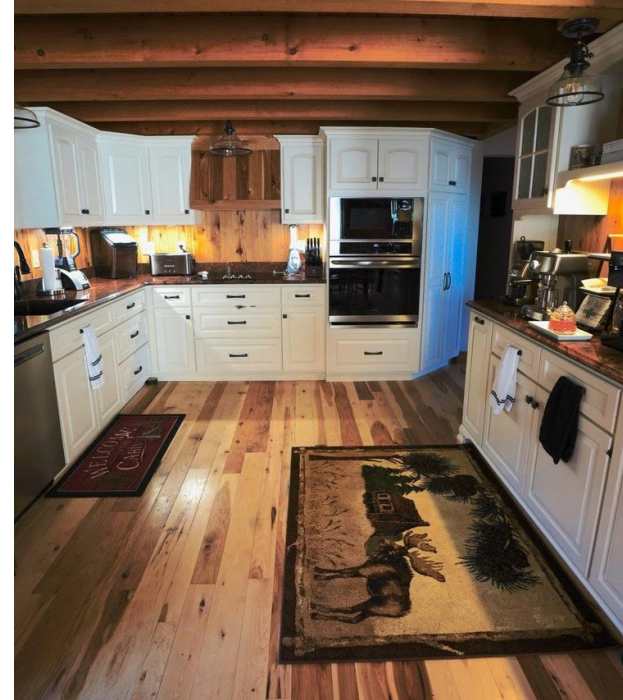


# Amenities

## Items Currently Available

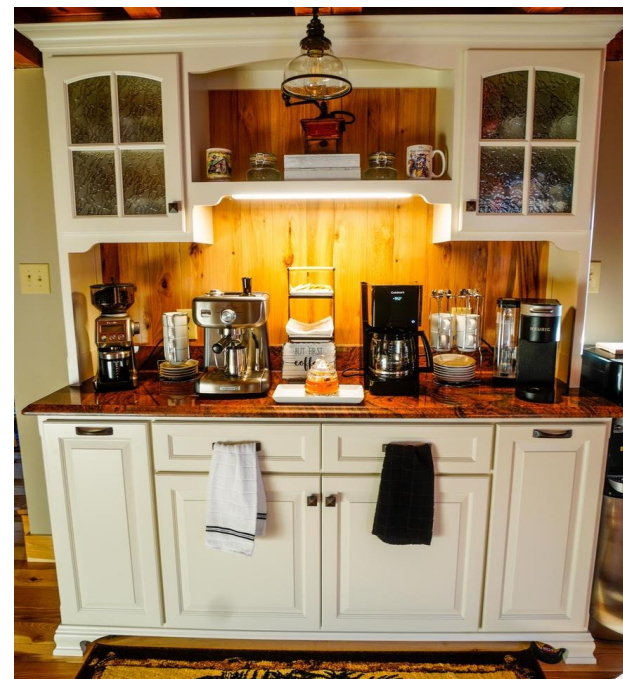
### KITCHEN

- Kitchen Appliances: Ninja Blender, Instant Pot cooker, mixer, Ice machine, large Breville Toaster, Microwave, electric griddle, small waffle maker, ceramic cooktop stove, new refrigerator, dishwasher
- Dish detergent, scrubbers, dishwasher detergent
- Kitchen towels and hot pads
- Calphalon pots and pans, ceramic bakeware, cookie sheets, muffin tin, etc.
- Self-sharpening Knives: Caution: EXTREMELY SHARP!!!
- Kitchen utensils, silverware and serving utensils, paper towels, paper plates, plastic plates and cups, ceramic plates and cups
- Nearly 30 spices, cooking spray, cooking oil, olive oil, balsamic vinegar, all-purpose flour, white flour, brown sugar, confectioner's sugar, cocoa, pancake mix



### COFFEE BAR

- Breville Barista Touch Espresso Machine w/grinder
- Espresso and Cappuccino cups
- Gourmet Espresso Beans
- Bunn "Pour-over" coffee maker with filters
- Breville coffee grinder
- Breakfast Blend and After Dinner Blend Coffee Beans
- Creamers, sugar packets, stevia, splenda, honey sticks
- Gourmet tea bags
- "To-go" disposable coffee cups with lids
- Hot, room temp and cold water dispenser with disposable cups
- French Press
- Keurig -- **Guests must provide their own Keurig K-cups**



# Amenities

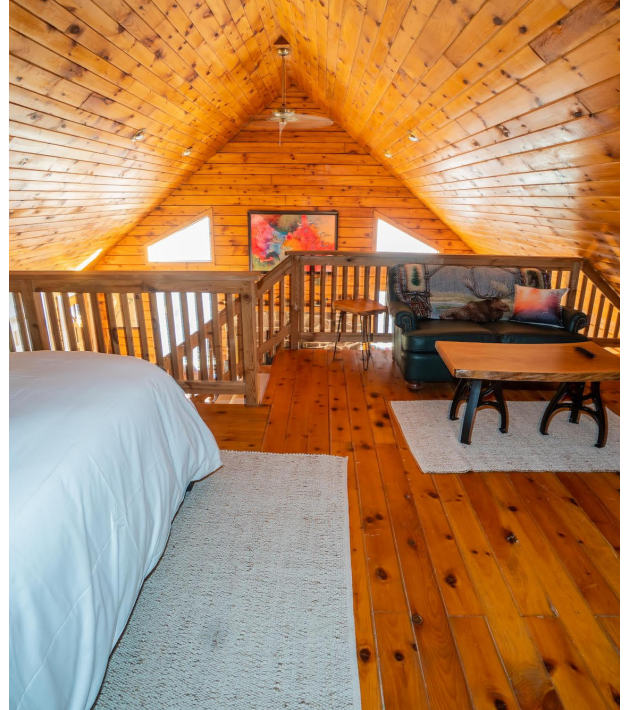
## Items Currently Available

### **BEDROOMS**

- Charging stations (in all bedrooms except bunkbed bedroom; also in great room)
- Luggage racks

### **OTHER**

- 3 Fire Extinguishers (Great Room, Deck, Kitchen)
- First Aid Kit
- Extra pillows and blankets (Great room closet)
- Gas grill
- Pellets for Fireplace
- Kindling/wood for Fire pit
- Corn hole
- Over 15 different board games, cards, poker chips
- PS4 game console and games
- Ms Pacman
- Variety of books in Great room bookcase



# House Rules

- **GETTING HERE:**

- Please drive slowly on Ezb Drive. Be alert for children, pets, and neighbors walking along the road
- Be respectful of our neighbors. Please do not trespass on their properties. Our property boundaries are to the road in the front, to the edge of the parking lot, partway up the hill behind the house and to the trees on the deck side.

- **WHILE YOU'RE HERE (INSIDE)**

- No pets allowed
- No guests without prior approval
- No parties
- We have Direct TV with HBO, Starz, and Showtime on all of the 8 TVs. Please do not stream movies or games. We have a data cap that does not support streaming.
- Take your shoes off when you come in the house.
- Children under the age of 16 should not be allowed in the Exercise Room unless under adult supervision. All exercise equipment is to be used at your own risk
- The lower level bathroom uses an "up-flush" system. PLEASE be very careful with this toilet. DO NOT put anything in it EXCEPT toilet paper. If this system clogs it may cause a great deal of damage. It will require a plumber visit and will cost several hundred dollars. Do not allow young children to use this bathroom unattended.
- All of the tables, dressers, nightstands were hand-crafted and custom made. Please use coasters on all wood surfaces and be careful with anything that could potentially scratch or damage the wood. Treat it with TLC!
- Be EXTREMELY CAREFUL with the knives! They are much sharper than you might expect.

# House Rules

- **WHILE YOU'RE HERE (OUTSIDE)**

- NEVER leave food outside where it could attract animals. Make sure outdoor trash cans are closed tightly
- This is a natural area with abundant wildlife including deer, bobcats, raccoons and a bear with cubs. Sightings are rare but, if seen, please do not approach any wild animals! Never leave children unattended outside.
- No smoking except at the fire pit.
- If using the fire pit, an adult must be present at all times. Never leave a fire unattended. Be sure to completely extinguish the fire and never use the fire pit on a windy day.

- **CHECKING OUT:**

- Take EVERYTHING home with you that you brought along
- Try to leave the FSL the way you found it.
- Turn off heaters, make sure windows are closed and doors are locked
- Optional (only if the spirit moves you!)
  - Strip beds of used bedding
  - Gather used towels
  - Run dishwasher
  - Start laundry

I have read and agree to follow the house rules while staying at the Squirrel.

-----  
signature

-----  
date



# Inside Fun

## Board Games

The collection of board games is located in the Game Room closet. Games include all of the old favorites from Battleship and Sorry to Monopoly and Clue.

## Playstation 4

Game console is set up in the game room with the 58" flat screen TV. Approximately a half dozen games are provided for you to play along with special gaming chairs and headphones. Our low data cap does not support streaming of games.



## Books

There are book shelves in the Great Room with a variety of different fiction and non-fiction books for your reading pleasure. Coming soon: a selection of children's books

## Ms. Pacman

This is the same game you see in arcades and bars except it has a huge selection of your favorite arcade. There are 15 different screens of 6 games to choose from. Some of the games available include: Ms. Pacman, Pacman, Galaga, DonkeyKong, Space Invaders, etc. Most of the popular ones are on the first few screens.

The on/off switch is located on the back upper right of the game. It can remain on the entire time of your stay unless you want to turn it off to prevent children from staying up all night playing it!

The screen that is on initially shows the different games available. Highlight the game you'd like to play and select. Select again to play. No money is required. All play is free!!

# Eat & Drink



## Boxers

Serving the best beer and pub food in Huntingdon County!

Fresh-cut french fries, burgers, sandwiches, home-made soup, desserts.

M-Th: 11 AM-9 PM; Fri-Sat: 9 AM-10 PM. Sun: Closed.

410 Penn St Huntingdon, PA 16652. Call (814) 643-5013.



## Three Twelve Kitchen and Cocktails

Specializes in seafood, steaks, and gourmet sandwiches with an emphasis on scratch made, local, and seasonal. Celebrate with artfully crafted cocktails, a curated wine list, and a fine selection of ice cold bottled beer. Gluten free and vegetarian options are plentiful. Stop by for brunch, lunch, and dinner, dine-in and take-out. Hours: Thu/Sun 11:00 am – 08:00 pm; Fri/Sat: 11:00 am – 09:00 pm. 312 Penn St, Huntingdon, PA 16652-1446 Call: (814) 643-7200.



## Woody's Bar-B-Que

Specialize in perfectly prepared slabs of ribs, beef brisket, BBQ chicken, grilled prime rib, smoked pork and more, all featuring our iconic smoke ring with just the right amount of crispy charred bark. Hours: M/W/Th 3-9 PM; F/Sa 11 AM-9 PM; Su 11 AM-8 PM. 7620 Lake Raystown Shopping Ctr Huntingdon, PA Phone:(814) 641-7429



## Wildflower Cafe

Specializing in Breakfast, soup, sandwiches, burgers, salads and baked goods.

Tu- Sa 8AM-3PM; Su 8AM-2 PM

516 Washington St, Huntingdon, PA 16652-1551

Call: 814-643-6206

# Eat & Drink



## ReKlaimed Vines Winery

Looking for some great wine? Go where we go--ReKlaimed Vines Winery. This fun, offbeat winery has everything from sweet, dry and fruit wines to "shimmer wines" and mead! Try something you've never had before in their tasting room. FSL guests get 10% off any purchase with the coupon in your welcome bag. Hours: Mon-Sat 11AM-7PM; Sun 1-6 PM. 233 South 4th Street, Huntingdon, PA (717) 363-2090



## Standing Stone Coffee Company

Run out of complementary coffee? Get more or try some other blends at Standing Stone. Freshly roasted gourmet coffee is their speciality. Also, check out their selection of wraps and baked goods. Monday-Friday 7am-8pm, Saturday 7am-8pm, Summer Sundays 10am-3pm  
1229 Mifflin Street, Huntingdon PA 16652  
Call: 814-643-4545



## Muddy Run Tavern

We offer fresh made square burgers served on texas toast. Specialty burgers such as the fat head, black & blue and our very popular firecracker. Our 9th street hoagie that are available in regular, mild or hot, along with other cold and hot subs. We also have 16 flavors of hand-dipped ice cream! Hours: Monday - Thursday: 11am-9pm; Friday: 11am-11pm; Saturday: 8am-11pm. 416 9th Street, Huntingdon PA. Call: (814) 506-9324



## Juniata Brewing Company

Beer, beer and more beer! Also wine and sandwiches. Trivia nights and live music. Sat and Sun: 12p-9p; Tue-Thu 2p-9p; Fri 2p- 10p. 1102 Susquehanna Ave, Huntingdon, PA 16652. Call: (814) 644-7553

# Eat & Drink



## Village Tavern Bar and Grill

Good food for the soul. Great atmosphere, sandwiches, homemade soups, pizza, salads, wings, etc. Free pool Sundays! Happy Hour Monday-Friday 5-7pm and Saturday-Sunday 1-3pm. Bottle beer specials daily!

Hours: Sunday-Tuesday 11am-10pm; Wednesday & Thursday 11am-11pm; Friday & Saturday 11am-12am.

9459 Main St, Huntingdon, PA 16652. Call: (814) 506-8037



## Paesano's Italian Restaurant & Pizzeria

Pizza, sandwiches and Italian food. Very close to the FSL.

Note: They ONLY take cash. There is an ATM machine there.

Monday-Sat 11am-10pm, Sunday 12pm--10pm,

5731 William Penn Hwy, Alexandria, PA 16611

Call: (814) 669-9199



## Diner 22

Whether you want a home-style breakfast, lunch or dinner Diner 22 in Alexandria, PA is the place to be! We are always serving up delicious food and friendly service at our classic American diner.

But we aren't just any old diner; we are still chugging along in a

railroad mail car built in 1919! Hours: Monday 7am-2:30 PM  
Tues-Sun 7am-7:45 PM 5094 William Penn Hwy, Alexandria, PA 16611. Call (814) 669-9094.



## Spruce Creek Tavern

Spruce Creek Tavern is an iconic venue in central Pennsylvania for down home comfort food including our Famous French Fries. Bring your friends and family!

Tues-Thurs 11:00 AM - 8:00 PM; Friday:-Sat. 11:00 AM - 9:00 PM. 5450 Isett Rd (Route 45) Spruce Creek, PA 16683.

Call: (814) 632-3287

# Sweets and Treats



## Sweetheart's Confectionery

Gourmet cupcakes in the heart of Huntingdon! In addition to chocolate and vanilla varieties, they offer Key Lime, Almond Joy, Cherry Chip, Banana Fluffernutter, Toffee Crunch, Tiramisu and dozens of other flavors. Ten flavors are available every day. Check the website for the current flavors.

Wednesday-Friday 10 a.m.-3 p.m. (temporary hours)

723 Washington Street, Huntingdon PA. Call: (814) 643-3785



## The Meadows Frozen Custard

The Meadows offers Vanilla, Chocolate and "Two" Flavors-Of-The-Day in Frozen Custard. Also for the Yogurt Lovers; they have Fat Free, No Sugar Added Vanilla, and a second low-fat frozen yogurt flavor that changes twice a week. The Frozen Custard and Frozen Yogurt are made fresh all day, every day.

Hours: 11am-9pm Daily 9081 William Penn Hwy.

Call. 814-643-6350.



## Gardener's Candies

Whether you want a home-style breakfast, lunch or dinner Diner 22 in Alexandria, PA is the place to be! We are always serving up delicious food and friendly service at our classic American diner.

But we aren't just any old diner; we are still chugging along in a railroad mail car built in 1919! Hours: Monday 7am-2:30 PM  
Tues-Sun 7am-7:45 PM 5094 William Penn Hwy, Alexandria, PA 16611. Call: (814) 669-9094.

## Nanny's Place

Sells soft serve ice cream, hamburgers, and sandwiches. Open April 30th through the beginning of September

Hours: Wed-Sun 11 AM-8PM.

11295 Raystown Rd, Huntingdon, PA. Call: (814) 819-0147



# Attractions

## Swigart Antique Automobile Museum

The William E. Swigart Jr. Antique Automobile Museum, located in Huntingdon, Pennsylvania, is a museum dedicated to the preservation of American automobile history. The collections began as a private passion of founder W. Emmert Swigart in about 1920. The current museum opened in 1957.

Opens May 29th. Reservations required. Call (814) 643-0885  
12031 William Penn Hwy Huntingdon, PA 16652



## Horseshoe Curve National Historic Landmark

The museum offers a variety of artifacts pertaining to the site and short films on the history of Horseshoe Curve. Horseshoe Curve is a three-track railroad curve on Norfolk Southern Railway's Pittsburgh Line in Blair County, Pennsylvania. Open Fri-Sun 10AM-5PM. Call: (814) 941-7743. 2400 Veterans Memorial Hwy, Altoona, PA 16601.



## Isett Heritage Museum

Isett Heritage Museum is home to the area's largest collection of antiques and memorabilia. The museum is family oriented, educational and fun for all ages and contains exhibits from the 1800's to present day. Admission is \$10 for adults and \$6 for students. Hours: Monday - Saturday 8AM to 5PM Sunday 12PM-5PM. 11941 Stone Creek Ridge Rd, Huntingdon, PA 16652



## Juniata College Museum of Art

Key holdings in the painting collection include American landscapes from the Hudson River School, still lifes and portraits; small-scale European genre scenes of the 17th – 19th centuries; a collection of 18th – 20th century portrait miniatures; and Modern and Contemporary works by Günther Spaltmann, Robert Birmelin, Romare Bearden, and Richard Mayhew.

Hours: Mon-Thu 1PM-8PM. Sat. 12PM-4PM. 1700 Moore St, Huntingdon, PA 16652



# For Kiddos

## Lincoln Caverns and Whisper Rocks

Purchase tickets online--limited tickets at door

\$11.98 children/\$18.98 adults

Special family tours available/LOTS of cool summer events!

7703 William Penn Highway / U.S. Route 22

Huntingdon, PA 16652

814.643.0268



## Delgrosso's Amusement Park

A family fun park where tons of Summer fun memories are made. Come spend the day and enjoy our Ride & Water Park.

We have over 30 Rides & Attractions. Free Parking, Free Admission. An All Day Fun Pass is needed for entry into the Water Park. 814-684-3538 or toll-free at 1-866-684-3538

4352 E. Pleasant Valley Blvd., Tipton, PA 16684



## Terrace Mountain Alpacas

Terrace Mountain Alpacas is a family owned Alpaca farm; Bob and his son, Daryl are partners, Mask required in the store. Monday thru Thursday, 9A-4P, call first (814-643-2854) leave message, so we can call you back. Fridays-Saturdays 9A-4P and Sundays 11A-4P. You can catch us by chance. At the barn at 7:30A-8:30A and back at the barn at 2P-3P to do our feeding. So just stop by. FREE! 7110 John Burn Road, Huntingdon, PA



## Huntingdon Holiday Bowl

Family fun!

Sun 1PM-10PM; Tu 12PM-10PM; W 5PM-10PM; Th 10AM-10PM; F 5PM-12AM; Sat 4:30 PM-12AM.

11862 William Penn Highway, Huntingdon PA 16652

Call [\(814\) 643-1399](tel:814-643-1399)



# For Hikers

## Standing Stone Trail

Standing Stone Trail is a 38.7 mile moderately trafficked out and back trail located near Huntingdon, Pennsylvania that features beautiful wild flowers and is rated as difficult. The trail offers a number of activity options and is accessible year-round.

2721 Warm Springs Ave, Huntingdon, PA 16652



## Stone Mountain Overlook

Stone Mountain Overlook is a 1.2 mile lightly trafficked out and back trail located near Huntingdon, Pennsylvania that offers the chance to see wildlife and is good for all skill levels. The trail is primarily used for hiking and walking and is accessible year-round. It is located in Rothrock State Park Allensville Rd, Miller Township, PA



## Ridenour and Hawn's Overlooks

Ridenour and Hawn's Overlooks is a 0.4 mile moderately trafficked out and back trail located near Huntingdon, Pennsylvania that features beautiful wild flowers and is good for all skill levels. The trail is primarily used for hiking, walking, and nature trips and is accessible year-round.

Overlook Rd. Huntingdon, PA 16652



## Standing Stone Trail & Turkey Hill Rd Loop

Standing Stone Trail and Turkey Hill Rd Loop is a 10 mile lightly trafficked loop trail located near Huntingdon, Pennsylvania that features a lake and is rated as moderate. The trail is primarily used for hiking and nature trips and is best used from April until September.





# For Hikers

## Flag Pole Hill Trail System

Flag Pole Hill Trail System is a 3.8 mile lightly trafficked loop trail located near Huntingdon, Pennsylvania that features a great forest setting and is good for all skill levels. The trail is primarily used for hiking and nature trips.



## Ross Trail System

Ross Trail is a 3.9 mile moderately trafficked out and back trail located near Huntingdon, Pennsylvania that features a great forest setting and is good for all skill levels. The trail is primarily used for hiking, walking, nature trips, and bird watching and is best used from March until October.

Rothrock State Park



## Brush Ridge and Dutch Alvin Trail

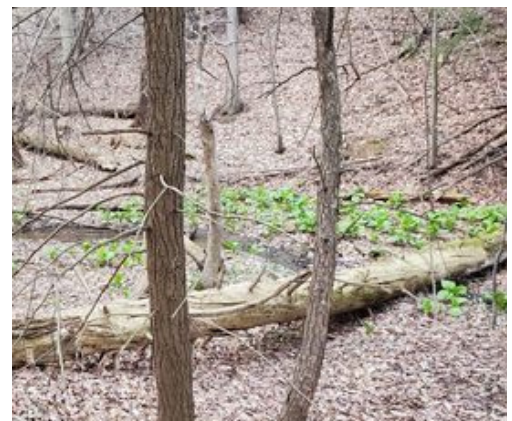
Brush Ridge and Dutch Alvin Trail is a 7 mile lightly trafficked out and back trail located near Huntingdon, Pennsylvania that features beautiful wild flowers and is good for all skill levels. The trail offers a number of activity options and is accessible year-round. It is located in Rothrock State Park Allensville Rd, Miller Township, PA



## Peace Chapel Trail System

Peace Chapel Trail System is a 1.9 mile lightly trafficked out and back trail located near Huntingdon, Pennsylvania that features beautiful wild flowers and is good for all skill levels. The trail is primarily used for hiking, walking, and nature trips.

Peace Chapel Dr in Huntingdon



# Outdoors: Parks

## Whipple Dam State Park

Surrounded by Rothrock State Forest in the northeast corner of Huntingdon County, this 256-acre state park is a delightful place for your next outing. Its 22-acre lake provides recreational opportunities such as swimming on a sand beach, boating (row or electric motors only), fishing (including ice fishing), bird watching or just plain relaxing. Three large picnic pavilions and many picnic tables are in a forest-covered area, close to the beach, and lake. Hand operated and pressurized drinking fountains, charcoal stoves and restrooms are throughout the park.

3746 Laurel Run Rd, Petersburg, PA 16669



## Canoe Creek State Park

Hiking, swimming, wildlife, boating, biking, horseback riding. Adjacent to the swimming area the boat concessionaire rents canoes, kayaks, paddleboats, and rowboats.

### **Bat Viewing**

Because it hosts a winter hibernation site and summer maternity site for bats including state and federally endangered species, the park is a Pennsylvania Important Mammal Area designated by the Pennsylvania Game Commission.

The Frank Felbaum Bat Sanctuary hosts a nursery colony of little brown bats. On warm summer nights, visitors attend programs and watch the emergence of scores of bats.

205 Canoe Creek Road, Hollidaysburg, PA 16648-9752

Phone: 814-695-6807



# Outdoors: Parks

## Allegrippis Trails at Raystown Lake

Designed by mountain bikers and built by the International Mountain Bicycling Association, the Allegrippis Trails at Raystown Lake is a premier single-track mountain biking trail system located in the Eastern United States.

The 24 trails in the system were designed and built to provide sustainable trails for a variety of human uses including mountain biking, hiking, trail running, snowshoeing and cross-country skiing. You can access the Allegrippis Trails at trailheads along Seven Points Road just past the Seven Points Entrance Station and on Bakers Hollow Road just before the Susquehannock Campground Entrance Station.

Raystown Lake Visitors Center 6993 Seven Points Road  
Hesston PA



## Standing Stone Trail

The Standing Stone Trail (SST) traverses through some of Pennsylvania's most scenic terrain and holds the distinction of being part of the evolving Great Eastern Trail, which will connect Alabama to New York. The Standing Stone Trail (SST) follows scenic, heavily wooded ridgelines in Huntingdon, Mifflin, and Fulton counties. Its features include the historic and popular Thousand Steps trail section, the spectacular vistas of Stone Mountain and the jumbled sandstone pillars and sinkholes comprising Rocky Ridge Natural Area

Thousand Steps:

40.391548, -77.913352



# Outdoors: Parks

## Rothrock State Forest

The State Forest comprises approximately 94,287 acres. Activities available include hiking, backpack overnight camping, bird watching, wildlife photography, hunting and fishing, horseback riding, snowmobiling, cross-country skiing, mountain biking, berry picking, auto touring, and picnicking. Two tracts of the forestland have been set aside as wild areas, each with its own distinct features. In addition, Bear Meadow Natural Area is recognized as a national natural landmark. 181 Rothrock Lane Huntingdon, PA



## Greenwood Furnace State Park

Nestled in the mountains of northeastern Huntingdon County, historic Greenwood Furnace State Park offers a unique recreational experience. The park is on the western edge of an area of Central Pennsylvania known as the Seven Mountains. It is an area of rugged beauty, abundant wildlife, breathtaking vistas and peaceful solitude. A walk through historic Greenwood Furnace evokes images of the community that flourished between 1834 and 1904. Today, this 423-acre park, to include a six-acre lake, is surrounded by an 80,000-acre block of Rothrock State Forest. Here you can enjoy camping in the 51-site campground, which includes 14 pet camping sites, swimming at the sand beach, picnic at one of eight pavilions, fish, play volleyball, baseball, bird watch, hike, or just plain relax. 15795 Greenwood Road, Huntingdon PA



# Outdoors: Parks

## Trough Creek State Park

Located along a scenic gorge created as Great Trough Creek cuts through Terrace Mountain and empties into Raystown Lake, this park is known for its natural and geological beauty. Camping, hiking, picnicking, and fishing are favorite activities in the 554 acre park. 16362 Little Valley Road, James Creek, PA



## Raystown Lake

118 miles of shoreline, 8,300 acres of clean, clear water, and 30 miles of lake, there is plenty of room to enjoy all types of water activity. Eight launch ramps are available for boaters. Picnic pavilions for rent; weekend events. Stop at the Visitor center at Seven Points Recreation Area.



## Ridenour and Hawn's Overlooks at Raystown Lake

Ridenour and Hawn's Overlooks offer a beautiful scenic view of the lake. Easy to get to--don't forget your cameras! It is located at GPS coordinates 40.43144, -78.01685 and is basically a roadside vista off of a paved road and circular parking area.



## Raystown Pagoda Overlook

The Raystown Pagoda Overlook is accessed via Raystown Dam Road, which passes directly below the breast of the dam. The overlook is located at GPS coordinates 40.43073, -78.00735, and there are restrooms located next to the pagoda and parking area.



# Contacts

## Emergencies: 911

Dan (cell).....(610) 914.7095

Heidi (cell).....(717) 304-1408

Penn Highlands Huntingdon Emergency Room

1225 Warm Springs Avenue,

Huntingdon, PA 16652.....(814) 643-2290

PH Huntingdon Urgent Care

7651 Lake Raystown Shopping Center,

Huntingdon, PA 16652.....(814) 643-8750

Pennsylvania State Police (Huntingdon)

10637 Raystown Rd, Huntingdon, PA 16652.....(814) 627-3161

Huntingdon Police Station

530 Washington St # 2, Huntingdon, PA 16652....(814) 643-3960

Alexandria Volunteer Fire Department

302 Hartslog St, Alexandria, PA 16611.....(814) 669-9107

Poison Control.....(800)222-1222

Email: [thefslodge@gmail.com](mailto:thefslodge@gmail.com)

# Check-Out

Please check out by 12:00

## Locks + Keys

Lock the doors and use the same code you used to open the door to lock the door of the main entrance. No key needed!

## Laundry + Bedding

Please do not make any beds that were used during your stay. **Optional**--only if the spirit moves you!--strip the sheets and pillowcases off the beds and gather all used towels and bath linens and put them in the laundry room to be washed.

## Tidy Up!

Please try to leave the FSL in the same condition that you found it. Put back any furniture you've moved, throw away any trash, put the dishes in the dishwasher, etc.

## Refrigerator

Please remove any food and drinks that you brought along with you.

Have a safe trip home!

# Where Do I Get.....

## Bed Linens

All sheets, duvets, duvet covers, pillows and bed linens were purchased from Brooklinen

## Beds

All beds were handcrafted by Martin's Furniture in Farmersville, PA.

<https://www.martinsfurniture.us/>

## Mattresses

Mattresses were purchased from Martin's Furniture in Farmersville, PA.

<https://www.martinsfurniture.us/>

## Wine

Our complementary wines are made exclusively at Charles and Christie of Reclaimed Vines Winery in Huntingdon.

## Coffee

We exclusively serve Standing Stone Coffee Company coffee, for our espresso beans as well as our own special FSL blend coffee beans in the Welcome bag. Thanks to Greg and Master Roaster, Kim. Standing Stone Coffee is located in Huntingdon.



## Photography and Artwork

~All landscape and nature photography was taken by Dan and Heidi Berg. Prints may be purchased by contacting Dan Berg at

<http://www.bergsprintstudio.com>

~All the art was painted by artist Amy Schade of Berks County. Prints may be purchased by contacting Amy at <http://amyschade.com/>

## Kitchen Cabinetry

The kitchen cabinetry was designed and built and installed by Jonas Peachy of Creative Woodworking, Tyrone, PA

## Dining Room Chairs

All dining room chairs were handcrafted by Zimmerman's Chairs, Lebanon PA.

<https://www.zimmermanchair.com>

## Goat Milk Soap

The complementary goat milk soap in the Welcome Bag was handcrafted by Lynn of River's Edge Beard and Soap Company in Alexandria





# Special Thanks To...

## **Confer Construction**

Thanks to Chris and his team: Wayne, Albert, Ruth and Jeff for the entire remodel and deck reconstruction

## **Crystal Schoning**

Thanks to Crystal for helping with decor design and being our personal shopper. Your assistance was invaluable!

## **Alex Dragon**

Thanks to Alex for all his advice, for the espresso machine and for helping set up our electronics!

## **Hartslog Valley Landscaping**

A special thank you to Tim Everhart for fire pit design and construction and all landscaping.

## **John C. Yenter Construction**

Thanks to Alan Boyer and his crew for stamped concrete walkways, new parking area and driveway widening. Special thanks to Alan's son, Nathan Boyer for "supervising."

## **Amy Quinn And Gail Roe**

Thanks to our fabulous cleaning crew: Amy and Gail. We couldn't do it without you!



# Special Thanks To...

## Dan Berg

I would like to give an enormous thank you to my husband, Dan Berg. Dan found this property, hired all of the crews and made all the final decisions involving decor. His attention to every detail really made the difference. Dan built the river table, all the furniture in the great room, all the nightstands, tables, cabinets and coffee tables in the lodge. He spent over 100 hours making the dining room table, alone!

Dan is not only a craftsman but a true Renaissance man. He photographed, printed and mounted nearly all of the pictures as well. Thank you, Dan for making this such a beautiful home! I love you!



# Thank You!

Lastly, we would like to thank you, our guests, for choosing to stay at the Flying Squirrel Lodge. We hope that your time here is full of lasting memories of laughter and love. We hope you consider us for future vacations.

*"The world is a book and those who don't travel read only one page."*

*Heidi & Dan*

